



Bias Tee

KEY FEATURES

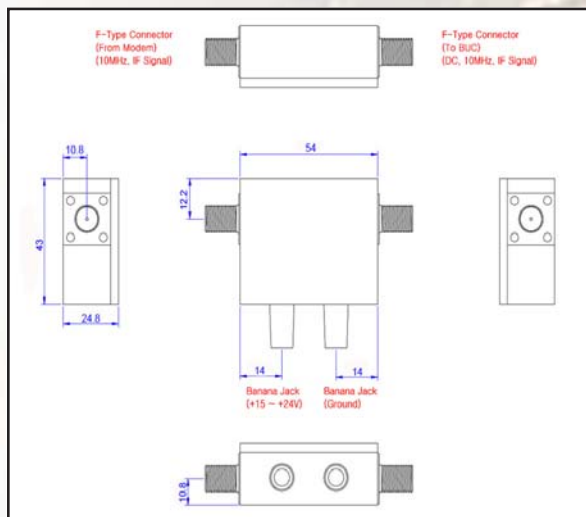
- ◆ Bandwidth 950 MHz to 2 GHz
- ◆ Operating temperature -45C - +80 deg C
- ◆ IF and 10 MHz passed through
- ◆ Up to 6 Amps DC input
- ◆ 15-64 VDC power input
- ◆ “N” or “F” RF interface options
- ◆ Two-year warranty

ABT6ACF / ABT6ACN

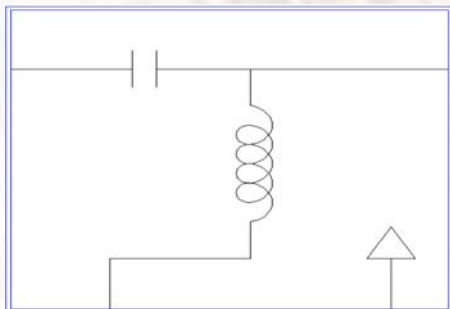


This small and efficient unit provides DC supply to a BUC (DC power supply separate) in case a modem cannot supply sufficient power or doesn't provide BUC power at all. The unit passes L-Band signal and

Mechanical Drawing



Electrical



TECHNICAL SPECIFICATIONS

RF frequency	950 MHz to 2 GHz
Voltage	15 – 64 VDC
Current	6 Amps max
Insertion loss	1.0dB max @10MHz 1.0dB max @950MHz–1.45GHz
DC interface	Banana jack
RF interface	
ABT6ACF	From modem & to BUC: F-type
ABT6ACN	From modem & to BUC: N-type
Impedance	
ABT6ACF	75 ohms
ABT6ACN	50 ohms
Temperature range	
operating	-45 deg C to +80 deg C
storage	-50 deg C to +85 deg C
Dimensions	54 (L) x 43 (W) x 24.8 (H) mm 2.12" (L) x 1.69" (W) x 0.98" (H)
Weight	150 g (25 oz) max